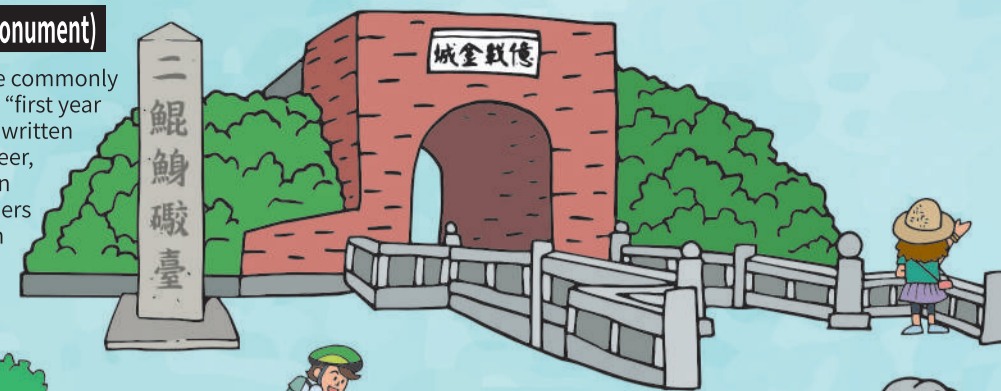


Eternal Golden Fort (Erkunshen Fortress, national historic monument)

The national historic monument Erkunshen Fortress is more commonly known as the Eternal Golden Fort because of the characters "first year of Guangxu Emperor rule" (1875) and "Eternal Golden Fort" written by Shen Pao-chen over its gate. Designed by a French engineer, this is Taiwan's first western-style battery. It is also the first in Taiwan to be equipped with Armstrong's Rifled Breech Loaders from England. At that time, Tainan was the capital of Taiwan and the most prosperous city on the island, thus this western bastion was built to strengthen its defense. With four protruding corners, the bastion is surrounded by a moat that is more than two meters deep.



Cha-Ha-Mu Aboriginal Park

It is said that four centuries ago, the coastal areas of Taijiang Lagoon (Chihkan and Anping in Tainan) were areas where the Tsou people lived. In the ancient Tsou language, Tainan was known as "Cha-Ha-Mu". The Cha-Ha-Mu Clubhouse and Cha-Ha-Mu Aboriginal Park were set up by Tainan City Government in 2004. The clubhouse is an education and exhibition space, and the outdoor area of the park has indigenous stone art pieces, an indigenous totem platform, a culture square, and an observation deck. It is the venue of the annual Tsou Day event, music festivals, Cha-Ha-Mu Market, and other activities.

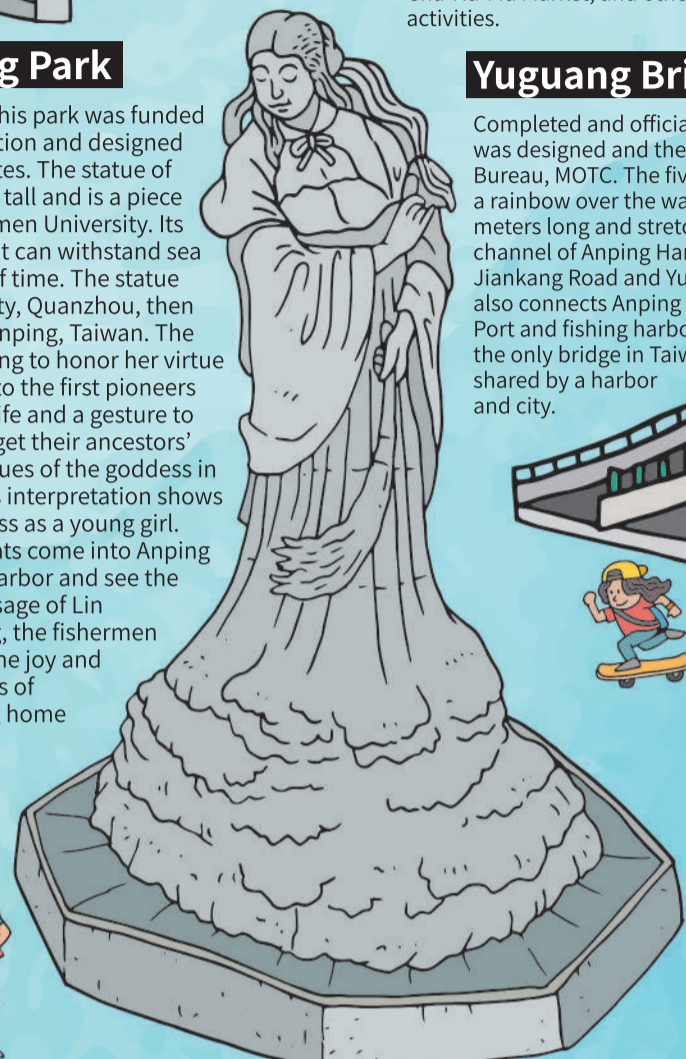
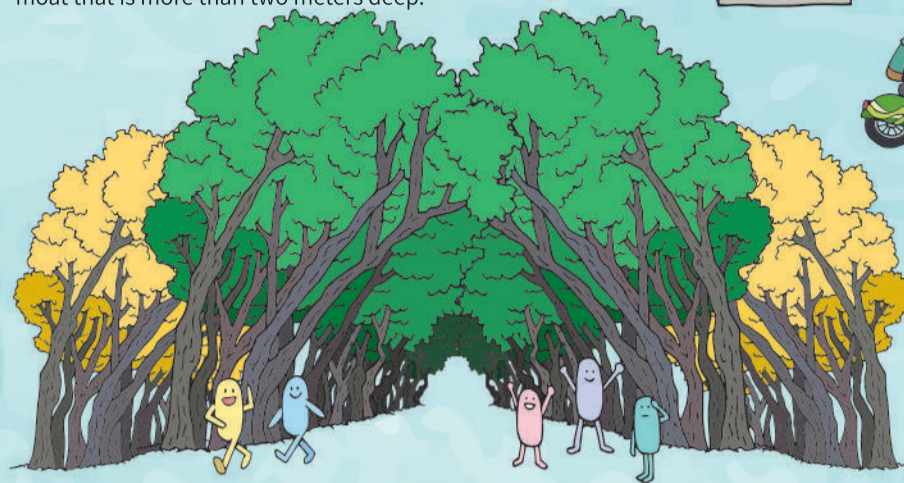


Yuguang Island

Yuguang Island used to be known as "Sankunshen". The character "kun" means the whales in the oceans and "shen" indicates the bulging back of the whale. In the 16th century, there were seven sandbars south of Anping. Starting from the north to the south, they were counted as "Yi-kunshen" ("first-kunshen") to "Chi-kunshen" ("seventh-kunshen"). Yi-kunshen is near present Anping Fort in Anping District, Er-kunshen ("second-kunshen") is present Eternal Golden Fort in Anping District, Sankunshen is present Yuguang Island, Si-kunshen ("fourth-kunshen") is present Kunshen in the South District, Wu-kunshen ("fifth-kunshen") is present Xishu in South District, Liu-kunshen ("sixth-kunshen") is Wanli in the South District, and Chi-kunshen is present Baishulun in Jiading District, Kaohsiung City. Legend has it that the locals used to take bamboo rafts out to sea at night and place a light on the casted fishnets to mark them. Looking out from the beach, people would see spots of light, which is known as "Yuguang" ("fishermen's lights"). Thus the name of Sankunshen was changed to Yuguang Island. The public art "Whale Tail in the Tide" on Yuguang Island combines two local ocean elements in the design: the tail of a whale and the surging waves. In mythology, to see a tail of a whale is good luck and symbolizes the fishermen will come home safe with a large harvest.

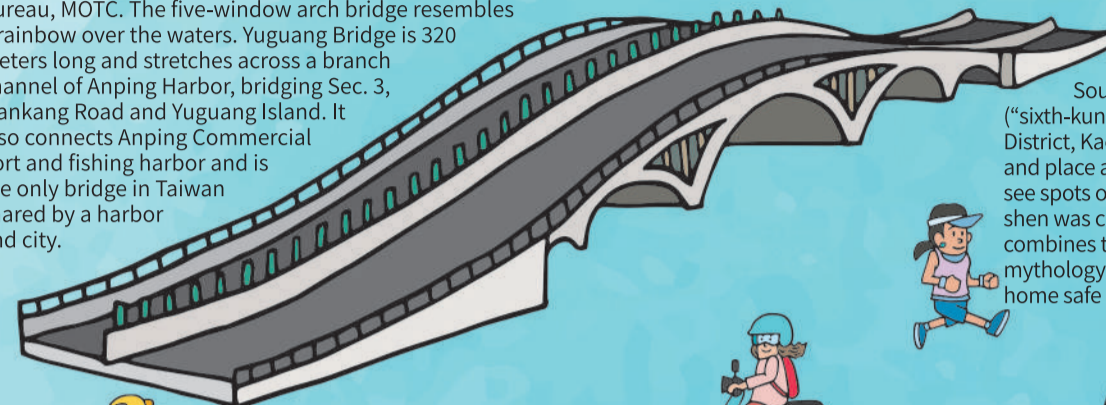
Lin Mo-Niang Park

Established in 2004, this park was funded by Chi Mei Culture Foundation and designed by Y.C. Tsai Architect & Associates. The statue of Lin Mo-Niang stands 16 meters tall and is a piece by Professor Li Wei-si from Xiamen University. Its material is a type of granite that can withstand sea winds for a significant period of time. The statue was completed in Hui'an County, Quanzhou, then shipped to and assembled in Anping, Taiwan. The park is named after Lin Mo-Niang to honor her virtue of filial piety. It is also a salute to the first pioneers who came here to start a new life and a gesture to remind the posterity not to forget their ancestors' sacrifices. Unlike the other statues of the goddess in temples, this interpretation shows the goddess as a young girl. When boats come into Anping Fishing Harbor and see the serene visage of Lin Mo-Niang, the fishermen will feel the joy and happiness of returning home safely.



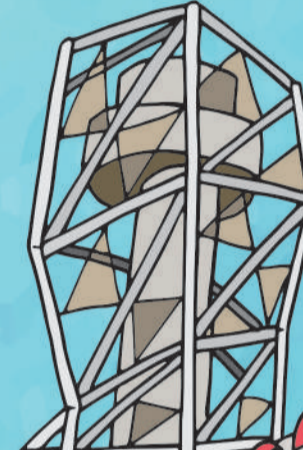
Yuguang Bridge

Completed and officially opened in 2008, the Yuguang Bridge was designed and then outsourced by the Kaohsiung Harbor Bureau, MOTC. The five-window arch bridge resembles a rainbow over the waters. Yuguang Bridge is 320 meters long and stretches across a branch channel of Anping Harbor, bridging Sec. 3, Jiakang Road and Yuguang Island. It also connects Anping Commercial Port and fishing harbor and is the only bridge in Taiwan shared by a harbor and city.



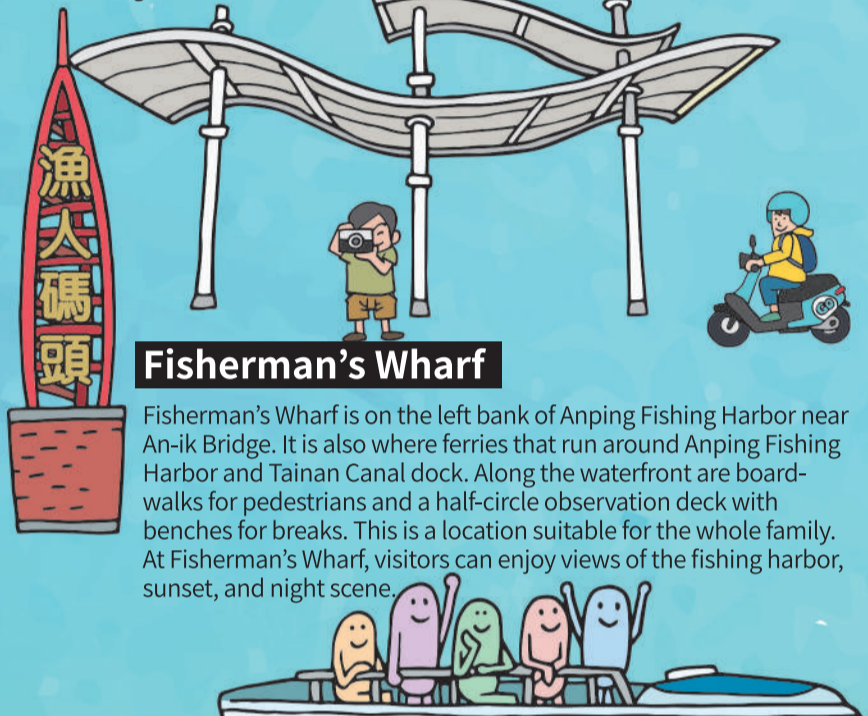
Anping Fishing Harbor Love Square

The Anping Fishing Harbor Love Square is located on a corner between the right bank of Anping Fishing Harbor (originally the deep-sea fishery harbor auction shed, repurposed as a fish market in 2002) and the ferry harbor. The Love Square displays sweet and joyful installation art pieces depicting love at different ages: between children, adults, and seniors. Every stage shows different interactions.



Fisherman's Wharf

Fisherman's Wharf is on the left bank of Anping Fishing Harbor near An-ik Bridge. It is also where ferries that run around Anping Fishing Harbor and Tainan Canal dock. Along the waterfront are boardwalks for pedestrians and a half-circle observation deck with benches for breaks. This is a location suitable for the whole family. At Fisherman's Wharf, visitors can enjoy views of the fishing harbor, sunset, and night scene.

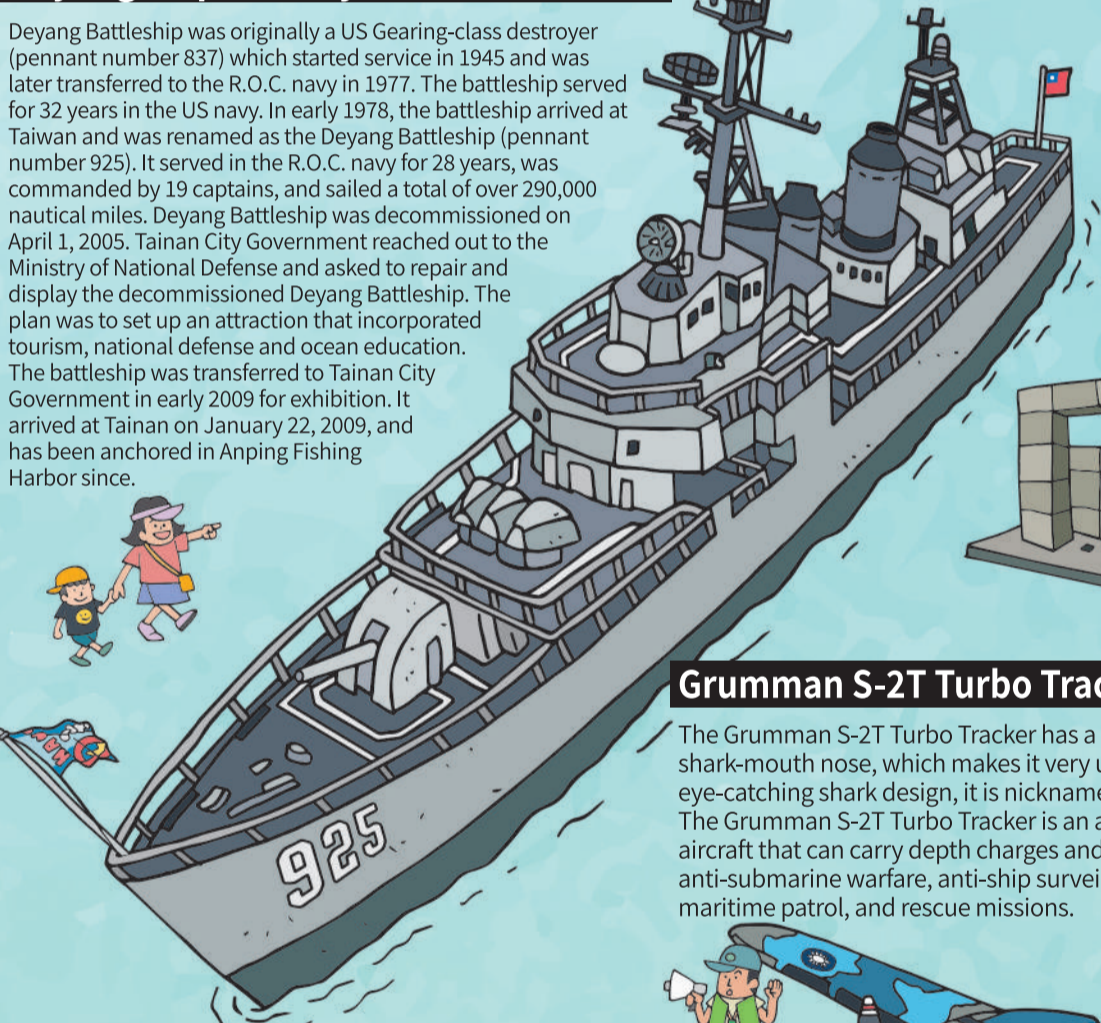


Eternal Golden Fort Park

With an area of 15.1 hectares, the Eternal Golden Fort Park is the second-largest park in Tainan City, right after the Tainan Metropolitan Park (40.9 hectares) where Chimei Museum is located. Numerous golden trumpet trees decorate the corners near the Eternal Golden Fort. Every early March the trees blossom and form a sea of golden yellow flowers. The Park is also home to many special trees such as pond spices, white teaks, African baobabs, tallow trees, and sea mangoes, and its rich biodiversity attracts plenty of birds.

Deyang ship destroyer Exhibition Hall

Deyang Battleship was originally a US Gearing-class destroyer (pennant number 837) which started service in 1945 and was later transferred to the R.O.C. navy in 1977. The battleship served for 32 years in the US navy. In early 1978, the battleship arrived at Taiwan and was renamed as the Deyang Battleship (pennant number 925). It served in the R.O.C. navy for 28 years, was commanded by 19 captains, and sailed a total of over 290,000 nautical miles. Deyang Battleship was decommissioned on April 1, 2005. Tainan City Government reached out to the Ministry of National Defense and asked to repair and display the decommissioned Deyang Battleship. The plan was to set up an attraction that incorporated tourism, national defense and ocean education. The battleship was transferred to Tainan City Government in early 2009 for exhibition. It arrived at Tainan on January 22, 2009, and has been anchored in Anping Fishing Harbor since.

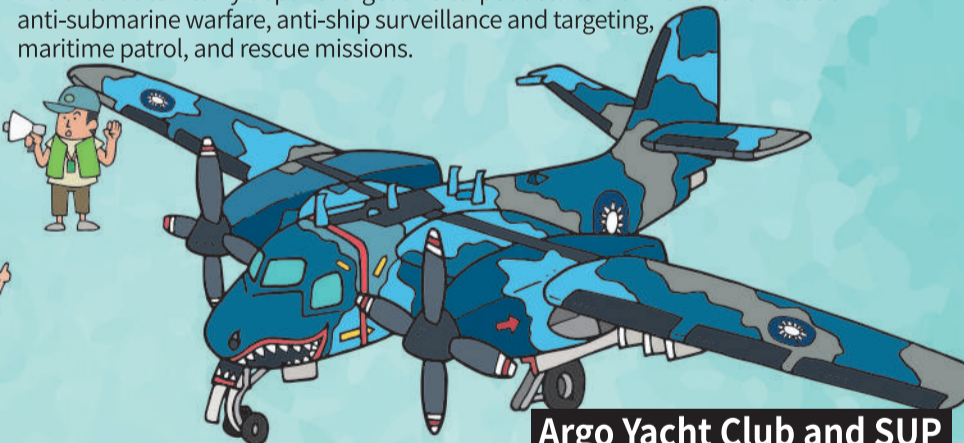


Anping Historic Harborside Park

The Historic Harborside Park is part of Anping Harbor National Historical Park. Stretching from east to west, the park displays the timeline of Tainan's history through seven themes: the pre-historic times (Indigenous Projection Plaza), the Dutch-Spanish period (Fort Zeelandia compass Observation Zone), the Koxinga era (Tuntian System/Chessboard-pattern Landscape Zone), the Qing Dynasty period (Taijiang Waterscape Zone), Japanese Rule period (Baroque Light Belt Plaza), the Republic of China era (Extended Ladder Ecosystem Flood Detention Zone), and the Future Outlook (Lin Mo-Niang Platform).

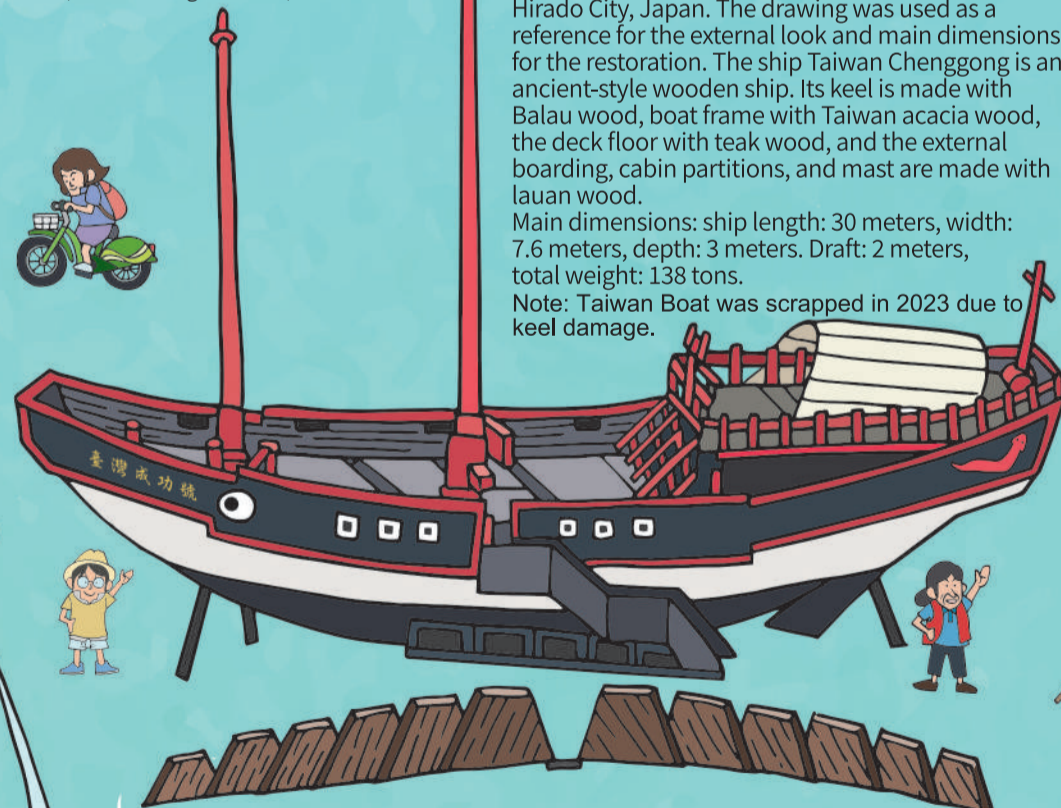
Grumman S-2T Turbo Trackers ("shark plane")

The Grumman S-2T Turbo Tracker has a marine camouflage coating and unique shark-mouth nose, which makes it very unique in our nation's air fleet. With its eye-catching shark design, it is nicknamed "shark planes" by military enthusiasts. The Grumman S-2T Turbo Tracker is an all-weather, four-passenger, high-wing aircraft that can carry depth charges and torpedoes. Its main functions include anti-submarine warfare, anti-ship surveillance and targeting, maritime patrol, and rescue missions.



Argo Yacht Club and SUP

The name Argo comes from Greek mythology. Argo was the name of a ship that was made by the ancient Greeks with the finest wood. After the sailors on this ship obtained the golden fleece, they gave this ship to the goddess Athena as an offering. Here at this new yacht harbor and club in Tainan City, visitors can enjoy many water activities, including yacht rides and SUP (stand-up paddleboarding).

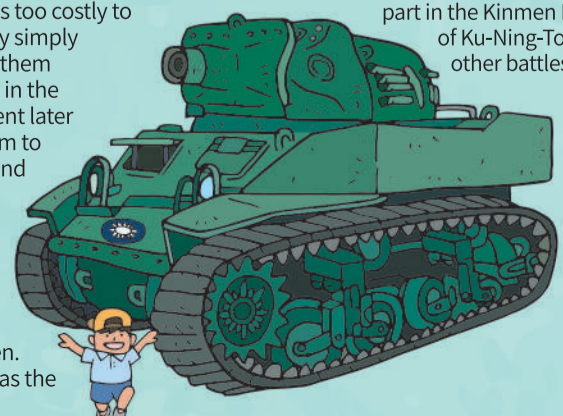


M8 75 mm HMC Tanks

The M8 75 mm HMC (howitzer motor carriage self-propelled gun) tank is a high-angle fire tank that was developed by the US in 1942. It is assembled by mounting an M8 75 mm HMC on a Stuart tank. This type of tank was used in the European, North African, and Pacific theaters during WWII. The R.O.C. government accepted 257 US M8 75 mm HMC tanks in 1947 and assigned them to the army's armor brigade. The tanks took part in the Kinmen Battle of Ku-Ning-Tou and other battles.

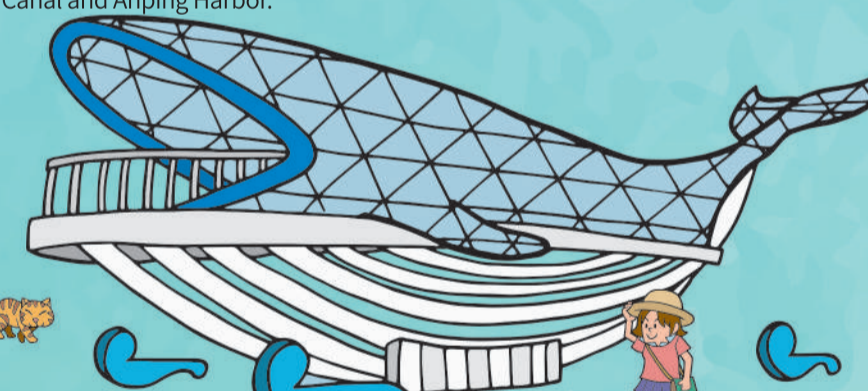
M5A1 Stuart Tanks

During WWII, the M5A1 Stuart tank was the tank type that was manufactured the most by the US. The British army, which used the tanks in the European theater, named it after the famous American Civil War general J.E.B. Stuart. The Stuart tank was the most widely used tank by the US and Allies during WWII. Since it was too costly to ship the tanks back to the US after the war, the US army simply removed the ammunition and comm systems and left them behind. Therefore many Stuart tanks were abandoned in the Philippines, Guam, and Okinawa. The R.O.C. government later bought the tanks from the Americans and shipped them to Shanghai, where the army looked for usable vehicles and components and repaired the tanks. In the end, the government gained 21 M5A1 Stuart tanks and formed two companies. The tanks were shipped to Kinmen after the operating personnel underwent a brief training session in Taiwan. The M5A1 Stuart tanks would later play a crucial role in the Battle of Ku-Ning-Tou (1949) when the Communist army attacked Kinmen. After the victory of the battle, the tanks were honored as the "Bears of Kinmen"



An-ik Bridge

An-ik Bridge separates the fishing harbor and the canal: on the west side of the bridge is Anping Fishing Harbor, and on the east is Tainan Canal. Tainan Canal connects Tainan City and Anping and was designed by Torata Matsumoto, an engineer of the Taiwan Governor-general's Office. The construction took place between 1922 and 1926. The completed canal was 3,782 km long, with a surface width of 37 meters and 1.8 meters of water depth during low tide. Tainan Canal not only extended Anping Harbor's shipping distance into Tainan City but also expanded the street coverage of the Greater Tainan Region.



Greetings from the Whale

Greetings from the Whale is a public artwork by Yang Shih-yi. Unveiled in early 2019, the piece is 23 meters long, 10 meters wide, and 8 meters in height. The upper part of the whale is constructed with stainless steel pipes welded together to preserve the pure aesthetics of lines. The entire structure employs no screws. The imagery of Taiwan within the whale is also constructed with stainless steel pipes and embedded with colorful glazed glass to form an island that symbolizes tolerance and a rich and diverse background. The entire installation artwork is over 20 tons. The lower half cleverly uses the belly of the whale to support the entire piece. Visitors can walk to the upper floor and enjoy the harbor view and sunset "from the inside of a whale".

Crescent Bay

Crescent Bay is located offshore of Yuguang Island. It is a large artificial beach nourishment project. The project built two spur-shaped moles - one at Anping Commercial Port breakwater (right bank - 350 meters in length) and the other at fishing harbor breakwater (left bank - 300 in length) to serve as headlands to stabilize the beach. The project employed natural construction methods and is the main trend of recent coastline recovery works. This can maintain or increase the area of beaches to protect the seacoast. Crescent Bay was set up in 2004 and has shown positive results so far. On the beach, you can see the wave breakers of the old days are now dozens of meters away from the current coastline.



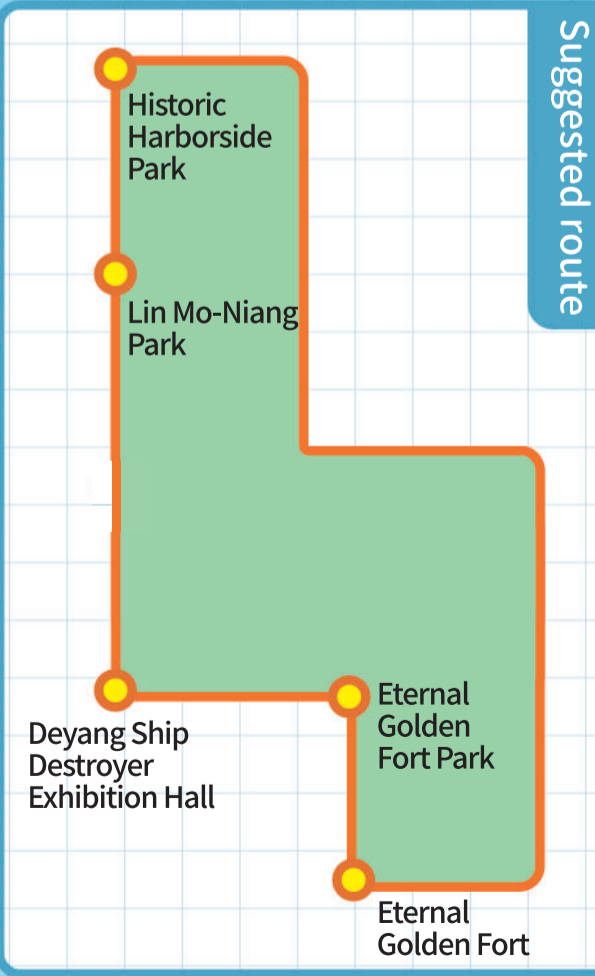
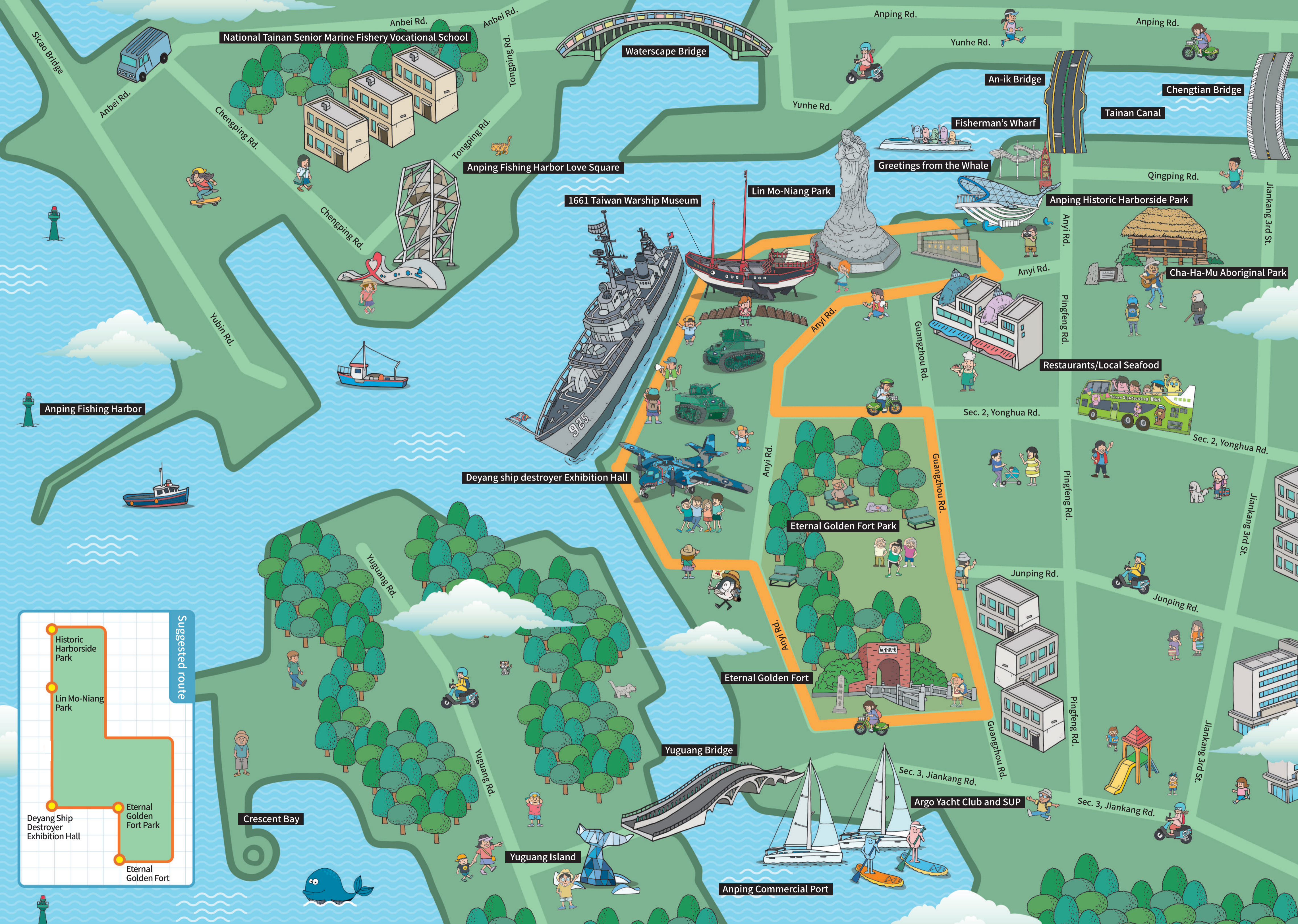
Minzhi Civic Center (Bureau HQ) 06-6353226
Tainan City Government Tourism Bureau
Yonghua Civic Center (Tourism Service Section) 06-3901175

Tainan City Government Travel Service Center

- Tainan Railway Station Travel Service Center
No. 4, Sec. 2, Beimen Rd., East Dist., Tainan City (06)2290082
- Tainan Airport Travel Service Center
No. 775, Jichang Rd., South Dist., Tainan City (06)3359209
- Former He Tong Building Visitor Information Station
No. 2, Zhongzheng Rd., West Central Dist., Tainan City (06)2213527
- Anping Travel Service Center
No. 790, Anping Rd., Anping Dist., Tainan City (06)2281382
- THSR Tainan Station Travel Service Center
No. 100, Guiren Blvd., Guiren Dist., Tainan City (06)6008338
- Tainan City Zuohehen Fossil Park Travel Service Center
No. 61-1, Cailliao., Zuozhen Dist., Tainan City (06)5732629
- Xinying Railway Station Travel Service Center
No. 1, Zhongshan Rd., Xinying Dist., Tainan City (06)6378821
- Wumile Travel Service Center
No. 75, Jingjiao, Houbi Dist., Tainan City (06)622725
- Hutoupi Scenic Area Service Center
No. 36, Ln. 42, Zhongxing Rd., Xinhua Dist., Tainan City (06)591325
- YueJin Art Museum Service Center (Yanshui)
No. 23, Zhongshan Rd., Yanshui Dist., Tainan City (06)6324453

Guided Tours
 09:00-11:00 am every Sunday
 Meet-up Spot: Eternal Golden Fort ticket booth plaza (Erkunshen Fortress) (No.3, Gwangju Road, Anping District)

QR codes for: Travel Tainan website (https://www.tainan.gov.tw), Tainan accommodations (https://stay.tainan.gov.tw), 24 hours travel information (Languages offered: Chinese, Japanese, English), Travel Tainan fanpage, Real-time bus information, Check out reviews on Tainan, Travel Tainan app, and AD.



National Tainan Senior Marine Fishery Vocational School

Anping Fishing Harbor Love Square

1661 Taiwan Warship Museum

Deyang ship destroyer Exhibition Hall

Eternal Golden Fort Park

Eternal Golden Fort

Yuguang Bridge

Yuguang Island

Anping Commercial Port

Argo Yacht Club and SUP

Anping Historic Harborside Park

Cha-Ha-Mu Aboriginal Park

Restaurants/Local Seafood

Greetings from the Whale

Fisherman's Wharf

Waterscape Bridge

An-ik Bridge

Chengtian Bridge

Tainan Canal

Anping Fishing Harbor

Crescent Bay

