

# Museums tourism



Numerous activities with regard to religion, festivals and ceremonies are held frequently in Tainan; we try our best to collect and introduce them all.

## Anping Sword Lion Museum

Sword Lions: The Guardians of Anping

In the early days, Anping was a sandbank surrounded by sea on three sides. Due to the shortage of land for construction, there were many feng shui taboos related to architecture. To ensure safety, residents used to decorate their houses with embossments of "sword lions" as talismans. There are 23 sword lions kept to date to guard the people of Anping. Each sword lion has its own features, with some playing innocently, some taking a shower and some showing masculinity. Roaming along the streets of Anping, visitors can enjoy the surprise brought by these cultural relics.

- 01 Curly Sword lion No. 1, Aly. 12, Ln. 40, Yunhe Rd.
- 02 Forceful Sword lion No. 8, Aly. 4, Ln. 850, Anping Rd.
- 03 Pug Sword lion No. 1, Aly. 12, Ln. 40, Yunhe Rd.
- 04 Infant-care Sword lion No. 31, Yunhe Rd.
- 05 Miaoshou Sword lion No. 6, Ln. 23, Yunhe Rd.
- 06 Snaggletooth Sword lion No. 6, Ln. 23, Yunhe Rd.
- 07 Ou's Sword lion No. 18, Aly. 3, Ln. 13, Yunhe Rd.
- 08 Righteous Sword lion No. 15, Ln. 23, Yunhe Rd.
- 09 Hovering Sword lion No. 1, Aly. 31, Ln. 13, Yunhe Rd.
- 10 Adorable Sword lion No. 4, Ln. 13, Yunhe Rd.
- 11 Lovely Sword lion Aly. 20, Ln. 131, Anbei Rd.
- 12 Shrugging Sword lion No. 47, Gubao St.
- 13 Permanent Sword lion No. 140, Yanping St. (Bolongfang)
- 14 Jhoulong Temple Sword lion Ln. 104, Yanping St. (Jhoulong Temple)
- 15 Mystic Sword lion No. 8, Ln. 104, Yanping St.
- 16 Haishan Hall Sword lion No. 7, Ln. 52, Siaojhong St.
- 17 Golden Sword lion No. 32, Jhongsing St.
- 18 Powerful Sword lion No. 44, Jhongsing St.
- 19 Resistant Sword lion No. 5 Ln. 131, Anbei Rd. (Next to the ancient well at the back of the house)
- 20 Showering Sword lion No. 10, Ln. 131, Anbei Rd.
- 21 Blessed Sword lion No. 5 Ln. 131, Anbei Rd.
- 22 Honest Sword lion No. 11, Ln. 121, Anbei Rd.
- 23 Styx Sword lion No. 73, Siaojhong St. Next to the Wunjhu Temple Gas Store



**Tourism Bureau of Tainan City Government**  
https://www.tw.tainan.net  
● MinJih Civic Center 06-6353226  
● Yonghua Civic Center 06-3901175

### Visitor Information Center

- Sinying Railway Station Visitor Information Center No. 1, Jhongsing Road, Sinying District, Tainan City 06-6378821
- Tainan Railway Station Visitor Information Center No. 4, Section 2, Beimen Road, East District, Tainan City 06-2290082
- Tainan Airport Visitor Information Center No. 775, Jichang Road, South District, Tainan City 06-3359209
- THSR Tainan Station Visitor Information Center No. 100, Guiren Boulevard, Guiren District, Tainan City 06-6008338
- ZuoJhen Moon World Visitor Information Center 06-5730061 No. 31, Ganglin Village, ZuoJhen District, Tainan City (Previously Ganglin Campus)
- Devuanpi Visitor Information Center 06-6231896 No. 100, Sincuo, Shenong Village, Liouying District, Tainan City
- Wumile Visitor Information Center No. 75, Jingliao, Houbi District, Tainan City 06-6622725
- Anping Visitor Information Center No. 790, Anping Road, Anping District, Tainan City 06-2281382

**大台南公車 TAINAN CITY BUS**

Green Line: Tainan→Yujing  
Blue Line: Tainan→Jiali  
Brown Line: Jiali→Xinying  
Orange Line: Jiali→Yujing  
Yellow Line: Baihe→Madou  
Red Line: Tainan→Guanmiao

Customer Service Number(s): 06-2230330

**Taiwan Tourist Shuttle service**

88 Anping Route  
99 Tainan City Scenic Spot Shuttle Bus

Tainan Bus 06-2219177  
Voice Service Number(s): 06-2998484

[Tainan Tourism] [Tainan Travel App] [Tainan Hotels] [tripadvisor]

Advertisement

### The Map of Anping Dist.



## Anping Old Street

**01 Anping Oyster Shell Cement Kiln Museum**  
• E03

The museum has square insides and round outsides, and the walls are covered with mottle. Exhibits show the ecology of oysters and the process of making oyster shell cement.

No. 110-1, Anbei Rd., Anping Dist. ☎ 06-2286836  
Open hours: 09:30-17:00 (Closed on Mondays)



**02 Fort Zeelandia Museum**  
• E03

The museum was previously the residence of British officials at the end of the Qing dynasty. The cultural relics, historical documents, and audiovisual materials provide visitors with a quick guide to the history of Anping and Taiwan.

No. 82, Guosheng Rd., Anping Dist. ☎ 06-2267348  
Full-fare: 50 / Half-fare: 25 - ☎ Open hours: 08:30-17:30



**03 Anping Local Cultural Museum**  
• E03

It was previously the dormitory for principals of Anping Elementary School during the Japanese ruling period. A collection of local cultural relics is displayed in the elegant Japanese-style building.

No. 64, Guanyin St., Anping Dist. ☎ 06-2295948



**04 Deyang Warship Museum**  
• E03

It was a destroyer in commission; however it is now a museum ship which still keeps part of its facilities such as artillery, communications equipment and radar systems, allowing visitors to experience the life of sailors.

No. 121, Anyin Rd., Anping Dist. ☎ 06-2932925



**05 Tainan City Aboriginal Cultural Hall (Cahamu Hall)**  
• E03

Tainan Prefecture was called "Cahamu" in the language of Tsou Tribe in the early days. For the sake of ethnic harmony, an aboriginal cultural hall was established for gatherings and exhibitions. There are also facilities such as harvest festival plaza, stone landscaping, wooden sculptures, stone slab stages, observatories, and "Kupa" (pavilions) in the park.

No. 472, Anyin Rd., Anping Dist. ☎ 06-2995826  
Open hours: 08:00-17:30 (Closed on Mondays)



**06 The Former Anping Customhouse of Tainan Canal**  
• E03

Modified from Anping customs in 2005, the Canal Museum displays a collection of local old photos and the Tainan Canal as well as relics of the customs, allowing visitors to learn about the history of Taiwan's maritime trades and fishery.

No. 97-15, Anping Rd., Anping Dist. ☎ 06-2214233

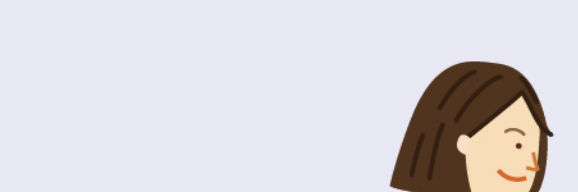
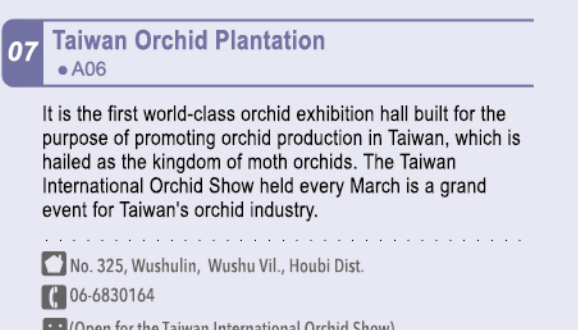


## Industrial Culture

**07 Taiwan Orchid Plantation**  
• A06

It is the first world-class orchid exhibition hall built for the purpose of promoting orchid production in Taiwan, which is hailed as the kingdom of moth orchids. The Taiwan International Orchid Show held every March is a grand event for Taiwan's orchid industry.

No. 325, Wushulin, Wushu Vil., Houbi Dist. ☎ 06-6830164  
(Open for the Taiwan International Orchid Show)



**08 Dongshan Cafe**  
• B06

It was once a Japanese rice milling plant. An introduction of Dongshan coffee and murals depicting the scenery of Dongshan is available in the hall. Bathed in the aroma of coffee, the hall is a place of choice for visitors to savor coffee in relaxation.

No. 1, Jhongsing Rd., Dongzhong Vil., Dongshan Dist. ☎ 06-6802816  
Mon-Fri: 10:00-17:00 Weekends: 12:00-17:30



**09 Taiwan Salt Museum**  
• C02

It features its unique appearance, resembling a salt heap. As the only themed museum introducing the salt industry in Taiwan, its purpose is to preserve the heritage of Taiwan's century-old salt industry.

No. 69, Yangcheng Vil., Cigu Dist. ☎ 06-7800990  
Mon-Fri: 09:00-17:00 Holidays 09:00-17:30

